

ProMinent Meta Motorised Metering Pumps



ProMinent Meta Motorised Metering Pumps are compact, consume less power, offer high accuracy and reflect the high quality standards of ProMinent Metering Pumps.

ProMinent Meta Diaphragm Pumps are available upto a capacity of 1000 l/hr. These Pumps can be offered with multiple heads.

The DEVELOPAN diaphragm of the Pump is made of high quality fabric reinforced EPDM with moulded in steel core and the media contacted side is coated with Teflon.

The Pumps use worm gear reduction and the capacity of the motors used is 0.18 kW, 0.37 kW or 0.75 kW depending on the model. These are suitable for a power supply of 415 Volts, 3 Phase, 50 c/s and can also be offered to suit other specifications.

The liquid ends can be offered in PVC (P), Poly Propylene (PP), Stainless Steel (S) or Teflon (T) depending upon the chemical.

The Pumps can be offered with motor speed controllers or servo controllers for stroke length adjustment wherever automatic control is needed.

Accessories like Pressure Relief Valve, Pulsation Dampner, Dosing Tank etc., can be offered with the Pump, as per the requirements. Complete Dosing Systems including flow meters, Tanks with Stirrers, Piping etc., mounted on skids can also be offered to suit any requirement.

Following information is needed to select a Metering Pump for an application:-

- Chemical to be dosed
- Capacity in litres / hour
- Back Pressure

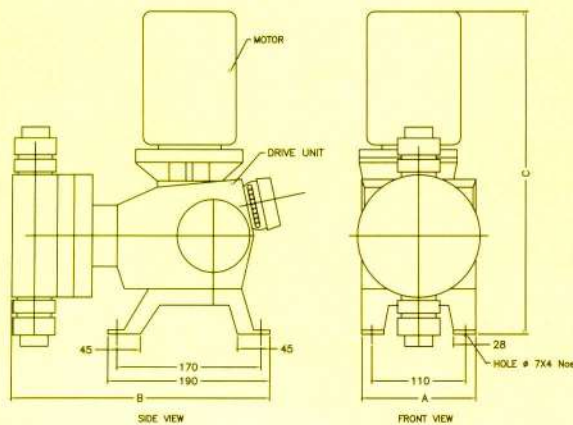
ProMinent Meta Pumps offer a highly reliable and proven solution for any metering requirement.

TECHNICAL DATA ProMinent Meta Diaphragm Metering Pumps

ProMinent Meta - MTMa : With motor 0.18 / 0.37 / 0.75 kW, 1000 / 1440 rpm, 415V, 50c/s

Pump Type	Pump Capacity at Max. Back Pressure		Max. Stroke / Frequency		Suction Lift	Admissible Pressure Suction side	Connection Size	Motor Power Output	Shipping Weight
	bar PP/SS	l/hr PP/SS	ml/stroke	strokes/min					
12040	10	40	15.0	50	5	2.8	11/4-20	0.18	16/20
12065	10/12	65/62	15.0	72	5	2.8	11/4-20	0.18	16/20
12086	10/12	86/83	15.0	96	5	2.8	11/4-20	0.18	16/20
12108	10/12	108/104	15.0	120	5	2.8	11/4-20	0.18	16/20
12130	10/12	130/125	15.0	144	5	2.8	11/4-20	0.18	16/20
10173	10	173	30.0	96	3	1.3	11/4-20	0.37	19/22
10200	10	200	44.8	72	3	1.3	11/4-20	0.37	19/22
07216	7.5	216	30.0	120	3	1.3	11/4-20	0.18	16/20
10216	10	216	30.0	120	3	1.3	11/4-20	0.37	19/22
06260	6	260	30.0	144	3	1.3	11/4-20	0.18	16/20
10260	10	260	30.0	144	3	1.3	11/4-20	0.37	19/22
10330	10	330	44.8	120	3	1.3	11/4-20	0.37	19/22
09395	9	395	44.8	144	3	1.3	11/4-20	0.37	19/22
05440	5	440	61.3	120	2	0.5	11/2-25	0.37	23/27
03530	3	530	61.3	144	2	0.5	11/2-25	0.18	20/24
05530	5	530	61.3	144	2	0.5	11/2-25	0.37	23/27
08530	8	530	61.3	144	2	0.5	11/2-25	0.75	25/29
03662	3	662	89.7	120	2	0.5	11/2-25	0.37	23/27
03790	3	790	89.7	144	2	0.5	11/2-25	0.37	23/27
05790	5	790	89.7	144	2	0.5	11/2-25	0.75	23/27
03960	3	960	89.7	192	2	0.5	11/2-25	0.37	23/27
041000	4	1000	89.7	192	2	0.5	11/2-25	0.37/0.75	25/29

DIMENSIONS



Pump Type	Dosing Head (dia)	A	B	C
12040/12065/12086/12108/ 12130/07216/06260	145	138	313	400
03530	180	138	321	400
10173/10200/10216	145	138	313	420
10260/10330/09395				
05440/05530/03662	180	138	321	420
03790/03960				
08530/05790/041000	180	138	321	470

Heidelberg ProMinent Fluid Controls India Pvt. Ltd. is a fully owned subsidiary of ProMinent Dosiertechnik GmbH, Germany.

For further details please contact :

Heidelberg ProMinent Fluid Controls India Pvt. Ltd.,

(Fully Owned Subsidiary of ProMinent Dosiertechnik GmbH, Germany)

2/2, MES Road, Yeshwanthpur, Bangalore - 560 022

Tel: 00 91 80 23578872 / 73 / 74, 23370730, 23374954 Fax: 00 91 80 23477984, 23573743

E-mail : prominent@hpcindia.com Website: www.prominentindia.com



ProMinent